

# UTOL series 2X2 OFFICE LUMINAIRE

## UTOL-SZ7

### Features :

- © Indoor 2 x 2 recessed design for false ceiling mounting
- © Powder coated low-maintenance, dust-resistant sheet steel body
- © Unique static powder painted fabric lampshade with superior luminous transmission/dispersion
- © High luminous efficiency with low luminous decay over the rated 100,000 hour lamp life
- © Compact structure and light weight provide flexibility and versatility along with very low maintenance

### Lamp and ballast :

- © Ultra-Tech's 40W – 150W rectangular tubular induction lamps feature superior lighting efficiency, producing more visually effective lumens (VEL) per watt than other lighting sources
- © Rated lamp life of 100,000 hours, the equivalent of 11 years at 24 hours per day, 365 days per year with a warranty of 10 years or 50,000 hours which ever comes first
- © Instant strike, flicker free, no cool down required, insensitive to numbers of on off, fast warm-up
- © Ultra Tech's electronic ballast featuring optional Vari-Lume™ controlled dimming technology for linear and step dimming functions via light sensor, RF signal, carrier signal, motion detection, autoranging from 110V-277V, power factor >0.95
- © Induction lamps are full spectrum containing R/G/B and C/M/Y resulting in a high CRI

### Applications :

- © Office overhead defused down-lighting, advertising display boards, gymnasiums, airports, bus terminals, train stations, exhibitions halls, stores, showrooms, warehouses and amphitheatres

### Installation :

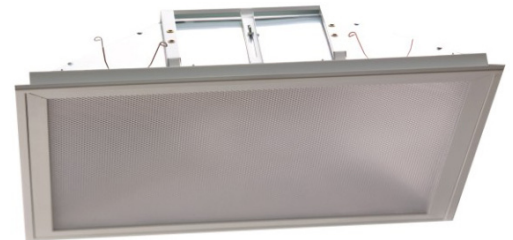
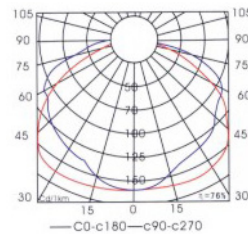
- © Installation method must allow for free airflow around the ballast to comply with warranty requirements

### Dimensions :

Unit: inches (mm)



### Photometric :



### Fixture Specifications :

Fixture Model No.	Lamp	Wattage (W)	Lamp lumens (Lm)	Voltage (V)	Color Temperature (K)	Ambient (°C)	Installation	IP class	CBM	N.W. (Kg)/ (LBs)	G.W. (Kg)/ (LBs)	UL CUL
UTOL-SZ7-40W	ST40W	40	2800-3200	100~300	5000	-20~+50	Grid Ceiling	IP65	0.090	4.50 /8.10	5.30 /9.54	Pending
UTOL-SZ7-60W	ST60W	60	4200-4800									
UTOL-SZ7-80W	ST80W	80	5600-6400									
UTOL-SZ7-100W	ST100W	100	7500-8500									
UTOL-SZ7-120W	ST120W	120	9000-10200									
UTOL-SZ7-150W	ST150W	150	12000-12750					0.090	5.00 /9.00	5.80 /10.44		

\* Note: Color Temperature 2720-6500K available upon request.