

GOLF-BRIGHT™

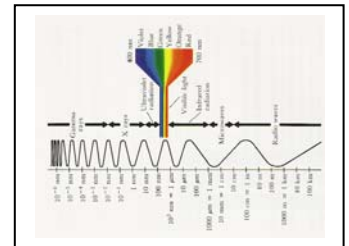
SAVE 70% ON POWER... UP TO 600% ON MAINTENANCE!
EXCLUSIVE MAGNETIC INDUCTION LIGHTING FOR DRIVING RANGES AND GREENS.

ULTRA-TECH™ LIGHTING

The Ultimate Healthful, Efficient, High Resolution Golf Range and Greens Lighting!

A new age of outdoor lighting technology specifically designed for resolving golf balls, greens, and other outdoor recreation areas is here! New Golf-Bright™ magnetic induction lighting (“MIL”) features the latest **LUMENTEC®** technology, providing these essential features:

- ◆ Full spectrum concentration in the visually perceptible range from 400nm to 700nm (visually effective lumens – “VEL”)
- ◆ Tuned color temperatures up to 10,000K representing northern sky
- ◆ Exceptionally high color rendition index (“CRI”) exceeding .90
- ◆ No flicker, hum, resonance or harmonics
- ◆ Ultra nano diffusion reflector technology with full dispersion
- ◆ Proprietary **VARIBEAM®** full cut-off focal technology
- ◆ **No dispersed mercury, no hazardous materials handling**



With **LUMENTEC®** spectral tuning technology, golfers gain better visual acuity for resolving motion, tracking balls, discerning colors, and perceiving ground contours. Unlike high pressure sodium (HPS) or metal halide (MH), there is no high frequency flicker that can cause “strobe effect.” Studies show a 5% to 20% increase in visual perception and even enhanced alertness. Consider the differences at a glance:

FEATURES	MH	HPS	LED	Golf-Bright™	Other MIL
100,000 hour lifecycle (11 yrs @ 24hrs/365 days)	No	No	No	YES	Yes
Up to 70% energy savings	< 30%	None	Some	YES	Some
LUMENTEC® Technology	No	No	No	YES	No
Proprietary VARIBEAM® Reflector Geometry	No	No	No	YES	No
Instant strike - no warm up or cool down	No	No	Yes	YES	Yes
Full Spectrum with CRI > .90	Few	No	No	YES	Some
Color Temperatures up to 10,000K	Rare	No	Rare	YES	Some
Exceptionally high power factor > .95	No	No	Some	YES	Some
Negligible “In-Rush” current	No	No	No	YES	YES
Unparalleled Warranty 5 years 50K hrs	No	No	No	YES	Some
Fully recyclable, no special disposal	No	No	No	YES	Yes
Lease Financing Available	No	No	No	YES	No

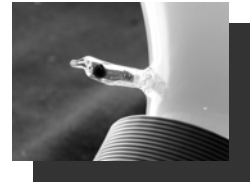
(Please turn page...)

Energy Efficient –

Golf-Bright™ lighting is up to 70% more efficient than conventional outdoor HID lighting. Golf-Bright™ offers substantially greater price/performance than LED while providing superior quality light and without the dangers of eye damage from direct LED exposure. Simply put, it is dangerous to look directly at an unshielded high intensity LED fixture. With Golf-Bright™ lighting, you reduce your electric bill and carbon footprint.

Saves up to 600% on maintenance –

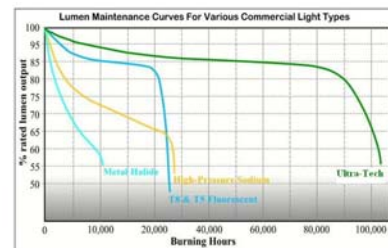
Typical metal halide and sodium lamps have a bulb life of less than 10,000 hours while LEDs may last 20,000 hours. This means Golf-Bright™ fixtures last 1,000%... ten times longer than high intensity discharge (HID) technologies and 500% longer than most LEDs. When considering labor and inventory overhead associated with maintenance, overall savings average 600%. Equally important, *there is no dispersed mercury which means no special handling*. The solid amalgam slug is removable and recyclable.



A small solid mercury amalgam ball is easily and safely snapped off for recycling. Magnets are recyclable metal and the remainder of the bulb is disposable glass.

Better Service Lifecycle –

Equally important, Golf-Bright™ lighting retains more than 85% of its luminosity over the 100,000 hour lifecycle while LEDs and HIDs rapidly deteriorate from the first moment they are installed and turned on. This means the performance you think you're getting from other lighting may be *far less* and not what you paid for! This is vitally important for outdoor recreation areas where light quality and intensity is critical to the athlete and spectator experience.



Graph of lumen maintenance of lamp lifecycles.

In addition, Golf-Bright™ lamps have no electrodes to burn out. This means they are not sensitive to on/off cycling and do not require a warm-up or cool-down between on and off. On/off cycles do not adversely affect lamp longevity as with other fixtures.



Models include wide-area floods, high-intensity floods, diffusion floods, box fixtures, and specialty lighting. Flexible auto-sensing “smart-ballasts” range from 110V to 277V. Hard wire or plug in. Lightweight and durable with ratings up to IP65.



Don't Wait! Act While Government and Power Utility Incentives are in Place!

Depending upon your lighting configurations and power utility, your facility may be entitled to special incentives that can be worth as much as 20% or more of the entire project cost. Government grants, utility rebates, and fungible tax incentives have never been better.

Call now for an evaluation. Contact:
Philip Gotthelf (201) 784-1233 x 100 (office)
(201) 4012-6068 (cell)
Inquiries: Philip@ultratechlighting.com