

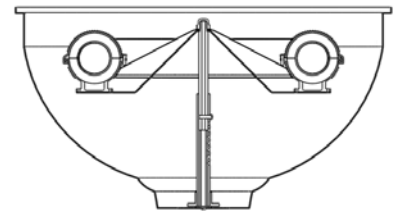
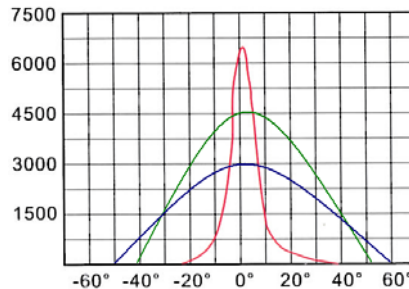
# ULTRA-TECH™ LIGHTING

## RINK BRIGHT™

### RB-HB-300WX5



- Rink-Bright™ **LUMENEC®** tuned spectrum
- Color Rendition Index (CRI) > .95
- 100,000 hour life cycle; 11 years 24 x 360
- **110V~277V or 310V~520V** and 50hz or 60hz auto-sensing ballast, .98 power factor
- Instant strike/re-strike, no warm-up/cool down
- Nano-particle reflector technology
- **VARI-BEAM®** focus technology
- IP55 rated, brushed aluminum



The Rink-Bright™ 300-Watt round high-bay is ideal for all types of indoor skating rinks. The unique full spectrum **full diffusion** fixture is perfectly tuned to the reflective properties of ice and is capable of replacing 1,000W metal halide and halogen lamps for energy savings of up to 75%. Proprietary Vari-Beam® technology allows changing the focal length to provide precision uniform lighting for the rink surface. The ultra-high efficiency driver (ballast) is available in **110V~277V or 310V~520V** auto-sensing and **50hz/60hz** to meet U.S. and European standards. Mercury is a solid encapsulated amalgam, making Rink-Bright™ environmentally friendly and safe. No special handling is required. No hazardous material disposal is necessary. But, with a 100,000 hour



lifecycle, most lamps will last up to half a century! Available with glass or polycarbonate lens. .

Rink-Bright™ light uses **LUMENEC®** technology that can actually improve athletic performance and increase overall safety. There is no flicker or strobe effect common to LEDs. Diffused light provides uniformity without hot spots. Instant strike means never having to wait for a warm-up or cool-down. The RB-HB-300WX5 is ideal for rink environments because it is a “cold lamp” that will not add to air conditioning overhead. At less than 20 pounds, Rink-Bright™ high-bays will lighten the load on roof structures and beams. The fixture is totally silent... no hum, buzz, or harmonics. See technical specifications on back for more information.



Contact: Philip Gotthelf ♦ (201) 784-1233 x 100 (office) ♦ (201) 401-6068 (cell)  
P.O. Box 566, Closter, NJ 07624-0566

### TECHNICAL SPECIFICATIONS

<b>MODEL</b>	<b>RB-HB-300WX5</b>
RATED WATTAGE	300W
VOLTAGE RANGES	120V~277V ± 15% 460V~520V ± 15%
CURRENT @ 120V~277V @ 460V~520V	1.105A~2.55A 0.6654A~0.58869A
FREQUENCY	50/60Hz
POWER FACTOR	0.98
IN-RUSH CURRENT	NEGLIGIBLE
RFI PART 15/18	SHIELDED
NOISE	<20dB
TYPE	MAGNETIC INDUCTION
COLOR RENDITION INDEX	>95
COLOR TEMPERATURE	6,500K~10,000K UV TRUNCATED
CERTIFICATIONS	UL/UL-C/CCC/CE/FC/RoHS/CB
B.U.G. RATING	0/0/<110
DARK SKY	COMPLIANT G(0)
CERTIFICATIONS	UL-C/CCC/CE/CB/RoHS
TEMPERATURE RANGE	-30°F ~ +140°F
RATING	IP55
FINISH	BRUSHED ALUMINUM
REFLECTOR	FULL-DIFFUSION NANO-PARTICLE
MOUNTING	PIPE OR FLUSH
FUSES	OPTIONAL 2 HOT FOR 480V
LUMENS PER WATT	95LPW~105LPW
VISUALLY EFFECTIVE LUMENS	~277/LPW

#### Available Options:

- ▶ Custom length pipe mounting with quick-release hook
- ▶ External dual-fuse for hot leads on 480V
- ▶ Available in 310V~520V auto-sensing ballast (driver)
- ▶ 3-prong twist-lock 480V NEMA plug
- ▶ **LUMENTEC** tuned spectrum with color temperatures from 6,500K to 10,000K

